

LAGEPLAN

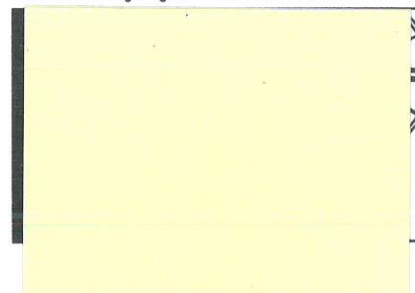
— ZEICHNERISCHER TEIL —
gem. § 4 Abs. 2–5 LBOVVO

KREIS: ENZKREIS
GEMEINDE: EISINGEN
GEMARKUNG: EISINGEN

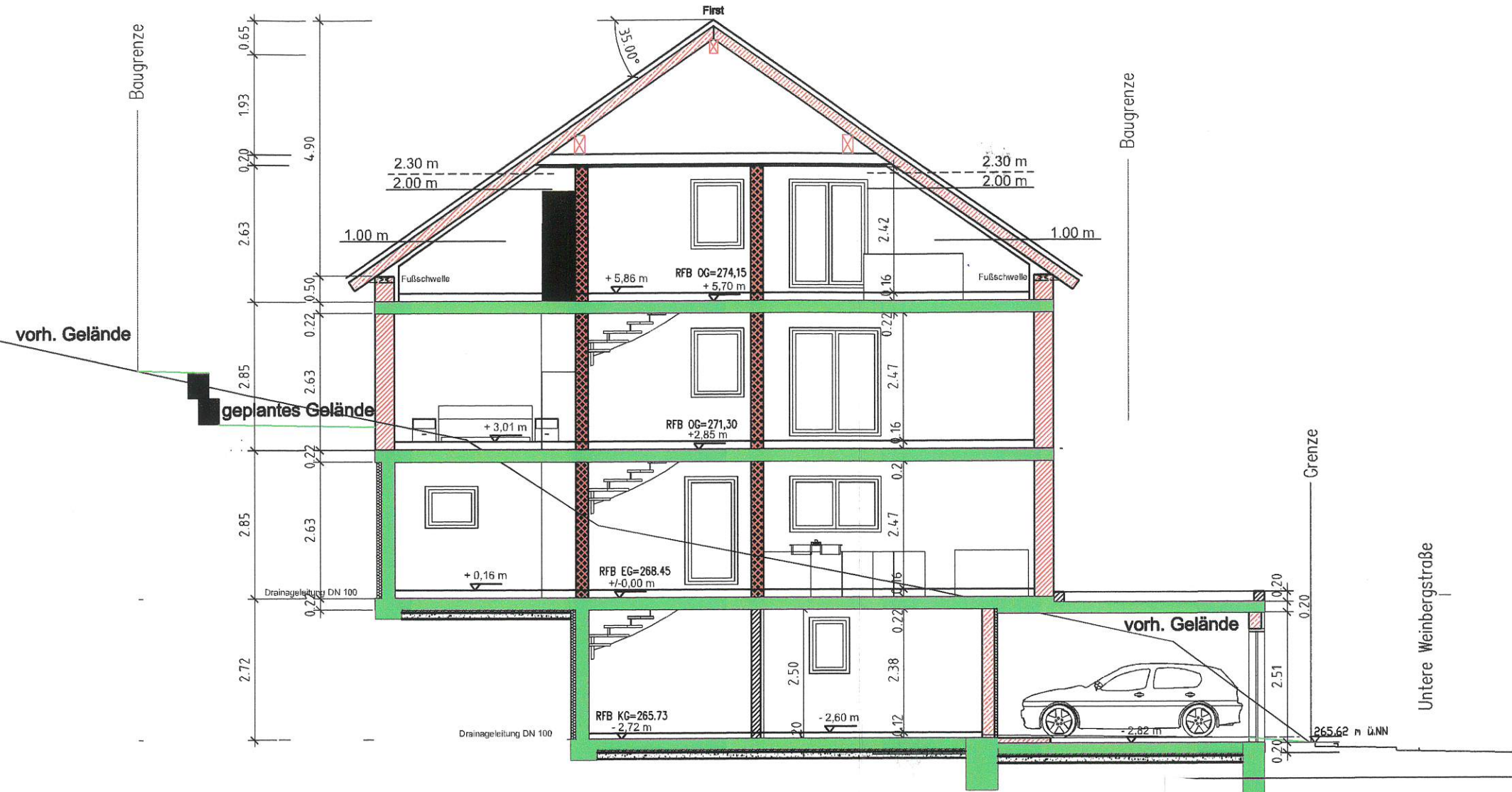


Gefertigt: 04.06.2021

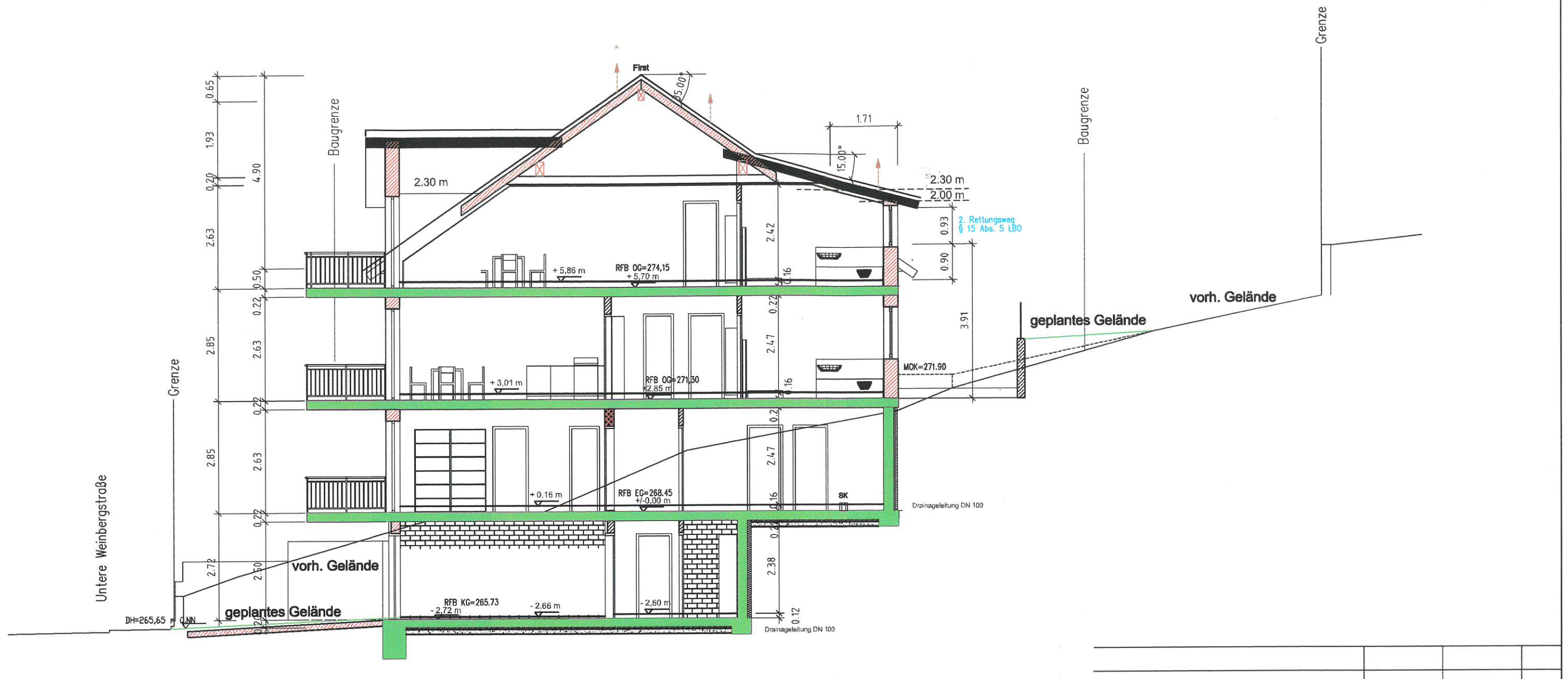
Sachverständiger gem. § 5 Abs.3 LBOVVO :



Schnitt A-A



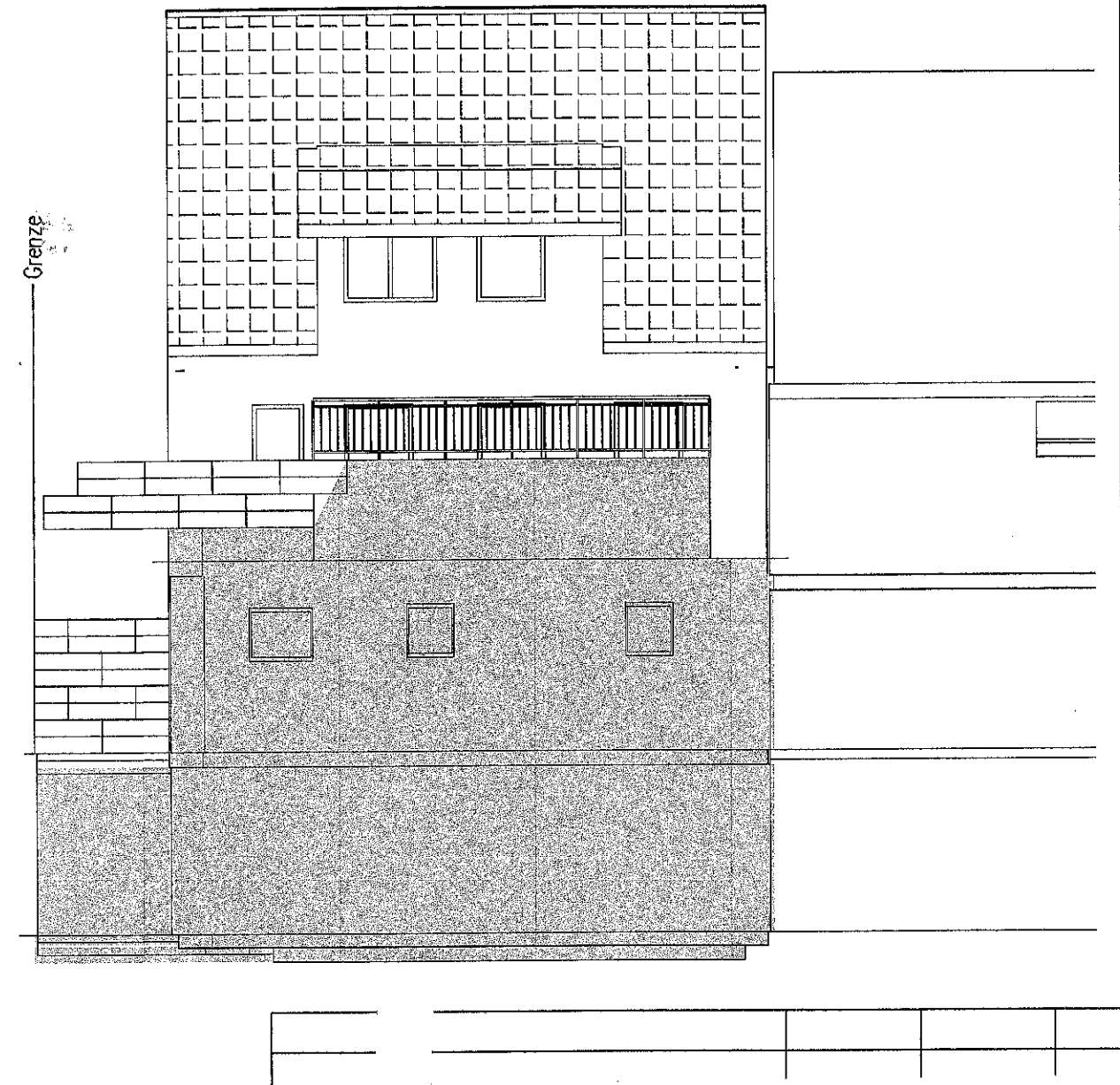
Schnitt B - B



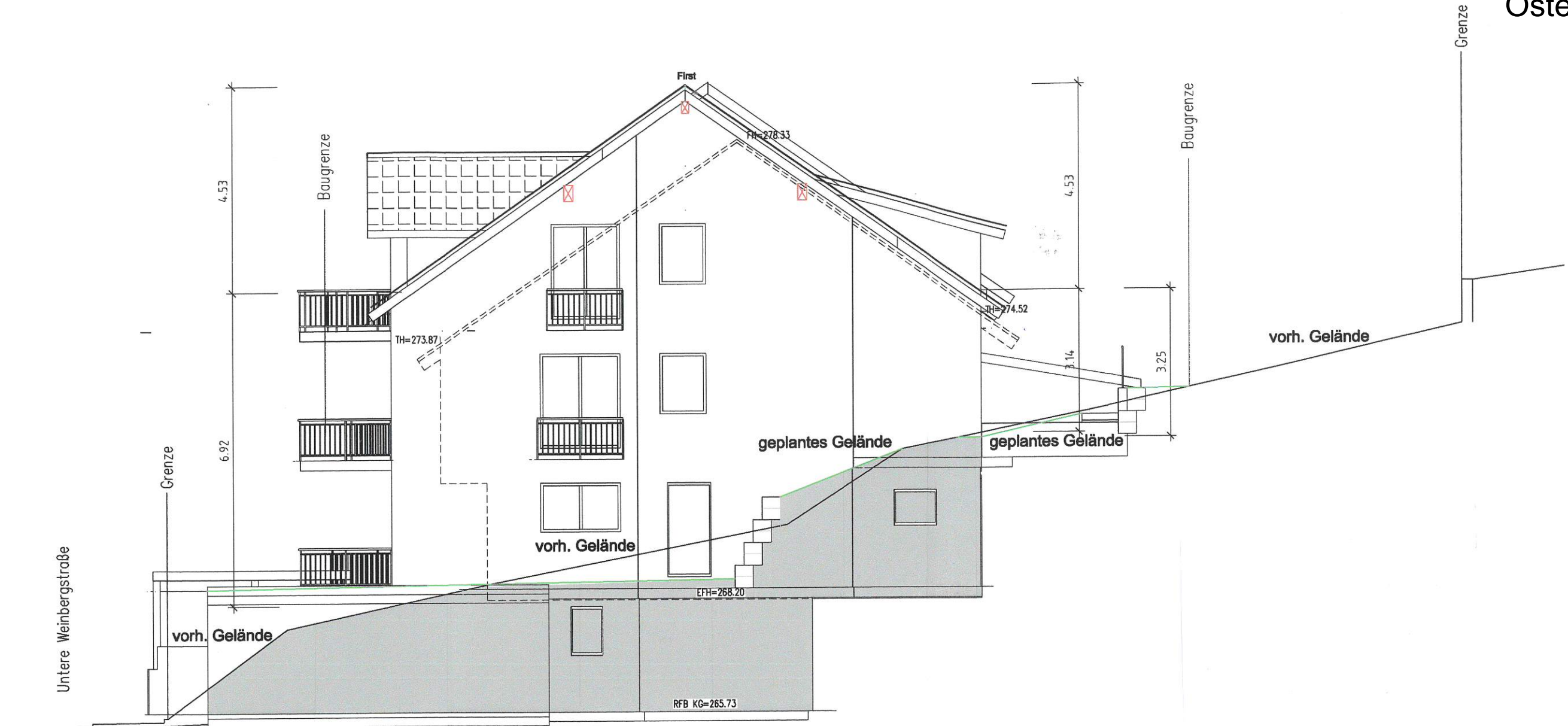
Süden



Norden



Osten



Westen

